
Epson Home Cinema Projectors

BRING 3D HOME ENTERTAINMENT INTO THE LIGHT



EPSON[®]
EXCEED YOUR VISION

Contents

Technology	04
Epson MG-850HD projector	05
Epson EH-TW480 projector	06
Epson EH-TW3200 projector	07
Epson EH-TW5900 projector	08
Epson EH-TW6000 projector	09
Epson EH-TW6000W projector	10
Accessories	11
Specifications	12

**REDEFINE HOME
ENTERTAINMENT WITH
NEXT-GENERATION
EPSON PROJECTORS.**



A PERFECT PERFORMANCE

Big-screen gaming, movies and sports will never be the same again thanks to the Epson home cinema range. With 3D, 3LCD and high definition technology at your fingertips, you not only see the action, you'll feel part of it. Add Wi-Fi and iPod connectivity too, and it's easy to see why we're the world No.1 for projectors*¹.

3LCD



However fast moving or detailed you like your games, movies or sports, Epson's exclusive, innovative 3LCD technology delivers bright, natural images that are smooth and easy on the eye, on a screen size of up to 300 inches.

Enjoy bright whites, deep blacks and vivid colours, even in daylight with high Colour and White Light Output. This new industry standard for picture quality makes it easy to evaluate performance and choose your perfect projector.

Epson 3LCD technology vs conventional projector technology



Single panel system*²



3LCD system*²

See the difference with Epson 3LCD technology. It provides superb image quality and smooth natural colour.

3D technology



Enjoy a spectacular new dimension with Epson's outstanding 3D technology. Forget about traditional image projection problems like crosstalk reduction and low brightness and enjoy a new 3D reality of bright, smooth and stunning images that really jump out at you.

Just sit back and enjoy the biggest, boldest, immersive experience around while our new panels, 3D light enhancement and 2D-to-3D conversion technologies handle the hard work.

iPod projector technology



Make a direct connection to your iPod®, iPhone® or iPad® with the Epson MG-850HD, the first HD-Ready 3LCD home projector*³ to feature an iPod docking station.

Now it's easier than ever to share all your downloaded movies, TV shows and photos on the big screen. You can even listen to music or podcasts without turning on your projector.



*¹ Source: Futuresource Consulting Ltd.
*² Illustrative purposes only
*³ As of September 2011

REVOLUTIONARY PROJECTOR WITH IPOD DOCKING STATION

This innovative 3LCD HD-Ready projector comes equipped with a built-in iPod*4 docking station, stereo speakers and carry handle for easy portability. Using just one power outlet, it can turn any room into an instant home cinema. Simply plug-in, dock and play!

Epson MG-850HD



Simply connect to the iPod docking station and use the dedicated menu to play music, videos, photos, TV and films downloaded from iTunes® on a large, cinematic scale.

Further enhance your home entertainment instantly – share and watch music, videos and photos direct from your iPod, iPhone or iPad on a large screen, up to 300 inches, without the need to download special applications. No iPod, no problems, this projector can be used with a DVD or Blu-Ray player as well as games consoles. The Epson MG-850HD ensures sufficient brightness and sound output wherever its location.

Key features

- 3LCD 720p HD-Ready docking station projector
- Contrast ratio of 3,000:1 and Colour/White Light Output of 2,800 lumens for viewing in daylight
- Great sound quality with 2 integrated 10W speakers
- 1.2x optical zoom
- Modern design, lightweight and portable with a built-in handle



Made for

iPod iPhone iPad



* Made for iPod nano (from 3rd to 5th generation), iPod Touch (from 1st to 4th generation), iPhone (3G, 3GS, 4) iPad (1 & 2)

MOVE GAMING UP TO THE NEXT LEVEL

Ideal for gamers, sports fans and general entertaining, this new HD-Ready 720p projector delivers rich and sharp images. Fun, light and easy to set up with integrated speakers, this portable projector allows you to take the big-screen experience with you wherever you go.

Epson EH-TW480



Remote Control

Take control and immerse yourself in big-screen entertainment from the best seat in the house.



Keystone Correction technology

Get a perfectly uniform image even when your projector is positioned at an angle to the screen with automatic vertical and manual horizontal Keystone Correction.

Get set up quickly and enjoy a perfect picture every time thanks to the manual horizontal Keystone Correction slider and automatic vertical Keystone Correction. Perfect for settling down for a film, projecting games or making sure sports fans don't miss the start of important events. What's more, you can cheer your team on in the daylight, thanks to high Colour/White Light Output of 2,800 lumens and Epson's 3LCD technology.

Key features

- 3LCD technology, 720p HD-Ready image quality
- Accurate contrast ratio of 3,000:1 and Colour/White Light Output of 2,800 lumens
- 1 integrated 2W speaker
- 1.2x optical zoom
- 4 colour modes
- Quick set-up and lightweight design
- 5,000 hour lamp life (eco mode)



3,000:1



DISCOVER FULL HD HOME ENTERTAINMENT

Sit back and immerse yourself in Epson Full HD 1080p projector technology for a stunning high definition experience. With a fully adjustable lens and zoom and superb brightness, you can project the perfect image on a screen up to 300 inches – in your own living room.

Epson EH-TW3200



Get involved in your favourite shows in Full HD, simply connect your set-top box, games console or DVD/Blu-ray player using the two HDMI inputs.

Key features

- 3LCD Full HD 1080p with 5 colour modes
- Deep blacks and crisp whites with 25,000:1 contrast ratio
- Colour/White Light Output of 1,800 lumens
- Easy installation with adjustable lens and zoom
- Two HDMI inputs for easy connectivity
- Quick and easy set-up with horizontal and vertical lens shift
- Great value with 4,000 hour lamp life



BRIGHT, AFFORDABLE FULL HD 3D PROJECTION

Discover why everyone's talking about 3D with this straightforward, affordable projector. Whether you love movies, sports or immersive gaming, you'll be amazed at impressive Full HD 1080p 3D images that really jump out at you.

Epson EH-TW5900



Featuring a split-screen function that's perfect for multiplayer video gaming or for watching two sports events at the same time. It's easy to install, has powerful integrated 10W speakers and connects to a large range of 3D sources to give you brighter 3D projections than many competitors – perfect for daytime viewing.

Key features

- 3LCD 3D Full HD 1080p
- Precise contrast ratio of 20,000:1 and Colour/White Light Output of 2,000 lumens
- Great sound quality with 2x 10W integrated speakers
- 1.6x optical zoom
- Bright 3D technology
- Viewing clarity with auto-colour optimizer
- Keystone Correction



20,000:1



FULL HD 3D HOME ENTERTAINMENT WITH EXTRA IMPACT

Add even more reality to your big-screen entertainment with this affordable Full HD 3D projector. Bring your favourite movies and shows to life at an affordable price.

Epson EH-TW6000



Discover a new visual experience with the power of Full HD 3D in the comfort of your own home. Powered by Epson's 3LCD and unique 3D technology, this projector offers sharp contrast ratio and bright natural images in 2D and 3D mode. You can also enjoy exciting features such as split-screen and slide show mode.

Key features

- 3LCD 3D Full HD 1080p
- Precise contrast ratio of 40,000:1 and Colour/White Light Output of 2,200 lumens
- Great sound quality with 2x 10W integrated speakers
- 1.6x optical zoom
- Bright 3D technology
- Viewing clarity with auto-colour optimizer
- Keystone Correction
- 1 pair of active shutter glasses for 3D viewing



Active shutter glasses

Ensure spectacular 3D viewing with these hi-tech glasses that constantly sync their integrated LCD shutters with the image as it is being projected, bringing you closer to the action.



ADD WIRELESS VERSATILITY TO FULL HD 3D ENTERTAINMENT

Lose the cables and enjoy one of the first home projectors to feature wireless Full HD 3D technology⁵. Watch films, sports or play video games in stunning quality with the lights on or off and directly connect wireless Blu-ray players and laptops for a real cinematic experience.

Epson EH-TW6000W



This is complete cable-free entertainment, allowing you to attach non-wireless devices to an HDMI adapter and project fantastic images. Whatever the source, quality is assured day or night, because the auto-colour optimizer adjusts settings to match the available light.

Key features

- 3LCD 3D Full HD 1080p with wireless feature
- Precise contrast ratio of 40,000:1 and Colour/White Light Output of 2,200 lumens
- Great sound quality with 2x 10W integrated speakers
- 1.6x optical zoom
- Bright 3D technology
- Viewing clarity with auto-colour optimizer
- Keystone Correction
- 1 pair of active shutter glasses for 3D viewing



1080p



40,000:1



2200 lm



3D



2 x 10W



2x HDMI



kg
7.0



⁵ Wireless HD function is available across the 27 members of the EU in addition to Iceland and Norway. Subject to change. For more information, please visit www.epson-europe.com

PROJECTOR ACCESSORIES

Bring out the best in your projector with a wide range of options that match the way you watch. From set up and installation to big-screen entertainment on the move, we've got it covered.

Epson 3D Glasses

These active shutter glasses optimise 3D viewing by constantly syncing with what is being projected. Lightweight, adjustable and with a long-life battery (up to 100 hours), they are also compatible with other 3D projectors in the Epson range.



Epson External 3D IR Emitter

All Epson 3D projectors have a 3D emitter embedded. The External 3D IR Emitter constantly synchronises the projected image with your active shutter glasses as you watch – up to a distance of 10m, creating the perfect 3D experience.



Epson Ceiling Mount

Permanent projector installation is neat, easy and unobtrusive with this tailor-made ceiling mount. It suits any position you choose and has optional extension pipes for extra flexibility.



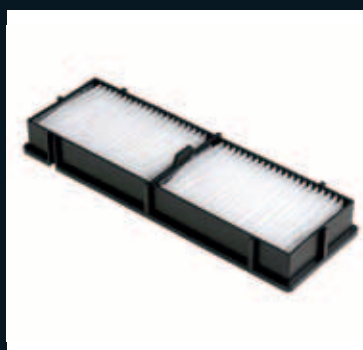
Epson Mobile Screen

This 16:9 lightweight folding screen displays every detail of the widescreen format and optimises image quality. It's also extremely easy to set up and take down.



Epson Air Filter

This is a crucial element of any projector. Long-life and maintenance-free, it is also simple to replace when the time comes.



Epson E-TORL Lamp

The Epson E-TORL lamp maximises your home cinema experience and minimises costs. It lasts up to 5,000 hours.



SPECIFICATIONS

	Epson MG-850HD	Epson EH-TW480	Epson EH-TW3200	Epson EH-TW5900	Epson EH-TW6000	Epson EH-TW6000W
Projection technology	3LCD	3LCD	3LCD	3LCD	3LCD	3LCD
Resolution	720p	720p	1080p	1080p	1080p	1080p
High definition	HD-Ready	HD-Ready	Full HD	3D Full HD	3D Full HD	3D Full HD + Wireless HD*1
Contrast ratio	3,000:1	3,000:1	25,000:1	20,000:1	40,000:1	40,000:1
Colour Light Output/White Light Output	2,800lm	2,800lm	1,800lm	2,000lm	2,200lm	2,200lm
Lamp life (eco-mode) (E-TORL)	5,000 hours	5,000 hours	4,000 hours	5,000 hours	5,000 hours	5,000 hours
Keystone correction	VH -30 to +30°	VH -30 to +30°	–	VH -30 to +30°	VH -30 to +30°	VH -30 to +30°
Screen size	33in to 318in	33in to 318in	30in to 300in	30in to 300in	30in to 300in	30in to 300in
Optical zoom	1.2x	1.2x	2.1x	1.6x	1.6x	1.6x
Throw ratio	1.30 – 1.56:1	1.30 – 1.56:1	1.34 – 2.87:1	1.32 – 2.15:1	1.32 – 2.15:1	1.32 – 2.15:1
Lens shift (V/H)	–	–	V ±96% H ±47%	–	–	–
Video input	1x iPod dock 1x HDMI 1x component 1x composite 1x PC 1x audio (L/R) 1x USB type-A 1x USB type-B	1x HDMI 1x RCA (Y) 1x audio (L/R) 1x PC 1x S-video 1x USB type-A 1x USB type-B	2x HDMI 1x component 1x RCA (Y) 1x PC 1x S-video	2x HDMI 1x component 1x RCA (Y) 1x audio (L/R) 1x USB type-A 1x USB type-B	2x HDMI 1x component 1x RCA (Y) 1x audio (L/R) 1x USB type-A 1x USB type-B	2x HDMI 1x component 1x RCA (Y) 1x audio (L/R) 1x USB type-A 1x USB type-B
Control and network input	HDMI CEC	1x USB type-B	RS-232C, 1x Trigger out	1x RJ45, RS-232C, HDMI CEC	1x RJ45, RS-232C, HDMI CEC	1x RJ45, RS-232C, HDMI CEC
Advanced features	Compatible with iPod®/ iPhone®/ iPad® devices*2	Game mode, slide show, direct power-on	Epson Cinema Filter, Epson super-white, direct power-on	Auto-colour optimizer, split-screen, slide show	Auto-colour optimizer, split-screen, slide show	Auto-colour optimizer, split-screen, slide show
Built-in speakers	2 x 10W	1 x 2W	–	2 x 10W	2 x 10W	2 x 10W
Weight/Dimensions (D x W x H in mm)	3.9kg 291 x 340 x 115	2.3kg 228 x 295 x 77	7.3kg 360 x 450 x 136	7.0kg 365 x 420 x 139	7.0kg 365 x 420 x 139	7.0kg 365 x 420 x 139
Compatible ceiling mount	–	ELP-MB23	ELP-MB22	ELP-MB22	ELP-MB22	ELP-MB22
Options	Air filter ELPAF37	Air filter ELPAF32	Air filter ELPAF21	Air filter ELPAF38, 3D glasses ELPGS01, external 3D IR Emitter ELPIE01*3	Air filter ELPAF38, 3D glasses ELPGS01, external 3D IR Emitter ELPIE01*3	Air filter ELPAF38, 3D glasses ELPGS01, external 3D IR Emitter ELPIE01*3
Warranty (Main Unit and Lamp)	MU-2 or 3 years depending on country Lamp-3 years	MU-2 or 3 years depending on country Lamp-3 years	MU-2 or 3 years depending on country Lamp-3 years	MU-2 or 3 years depending on country Lamp-3 years	MU-2 or 3 years depending on country Lamp-3 years	MU-2 or 3 years depending on country Lamp-3 years

*1 Wireless HD function is available across the 27 members of the EU in addition to Iceland and Norway. Subject to change. For more information, please visit www.epson-europe.com *2 Made for iPod nano (from 3rd to 5th generation), iPod Touch (from 1st to 4th generation), iPhone (3G, 3GS, 4) iPad (1&2). *3 A 3D emitter is built into these projectors, the target distance covered between the projector and the screen for 3D synchronisation is 5m. Larger rooms, the distance may not be enough, users can lengthen the distance to 10m by using the external IR Emitter (option).



Better Products for a Better Future™

For further information please contact your local Epson office or visit www.epson-europe.com

Austria 0810/20 01 13 (0,07 €/Min.) Belgium 070/350120 (0.1735 €/min.) Czech 800/142 052 Denmark 44 50 85 85 Finland 0201 552 091 France 09 74 75 04 04 (0,12€/min) Germany 01805/23 41 10 (0,14 €/Min.) Greece 210-8099499 Hungary 06800 147 83 Ireland 01 436 7742 Italy 02-660321 10 (0,12 €/min.) Luxembourg 900/43010 (0,24 €/min.) Middle East +9714 8818934 Netherlands 0900-5050808 (0.05 €/oproep + 0.15 €/min.) Norway 22 06 42 80 Poland 0-0-800 4911299 (0,16 zł/min.) Portugal 707 222 111 Russia (095) 777-03-55 Slovakia 0850 111 429 South Africa (+2711) 465-9621 Spain 93 582 15 00 Sweden 0771-400135 (Mobilsamtal – 0,99 kr/min, Lokala samtal – 0,30 kr/min, Utlandssamtal – 0,89 kr/min) Switzerland 0848 448820 (4-8 cent./min.) Turkey (0212) 3360303 United Kingdom 0871 222 6702

Trademarks and registered trademarks are the property of Seiko Epson Corporation or their respective owners. Product information is subject to change without prior notice.

EPSON®